

Non-identified lock on hinged landing door

GNI-S

41
740

DATA RECORD

Incl. A du 13/08/2009

FP

Document non contractuel, sous réserve de modification - Reproduction interdite.

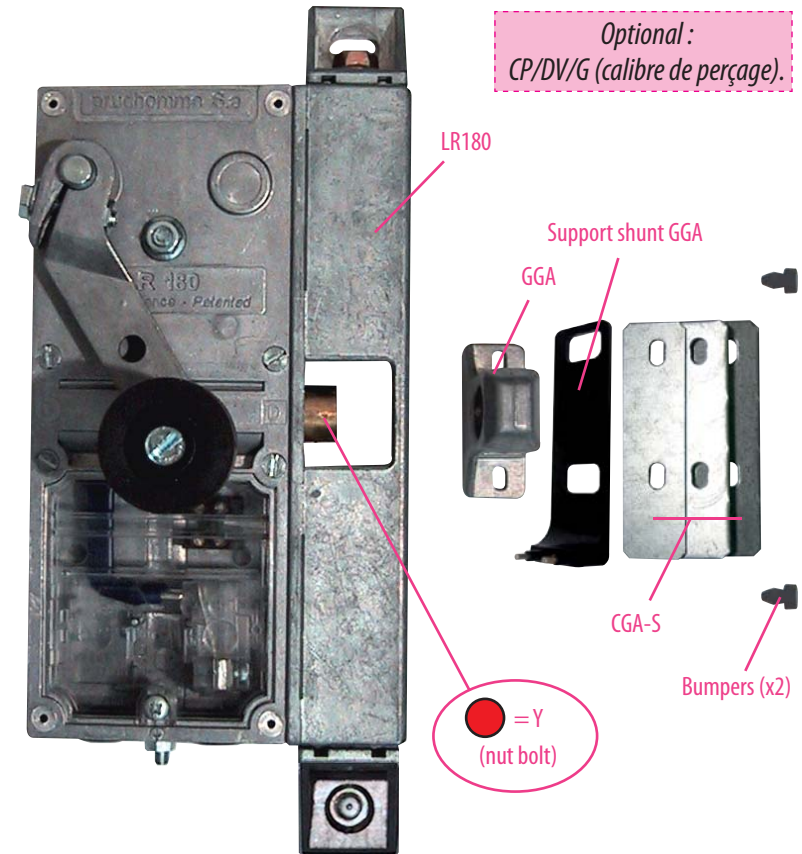
For hinged landing doors

To replace :
Non identified locks



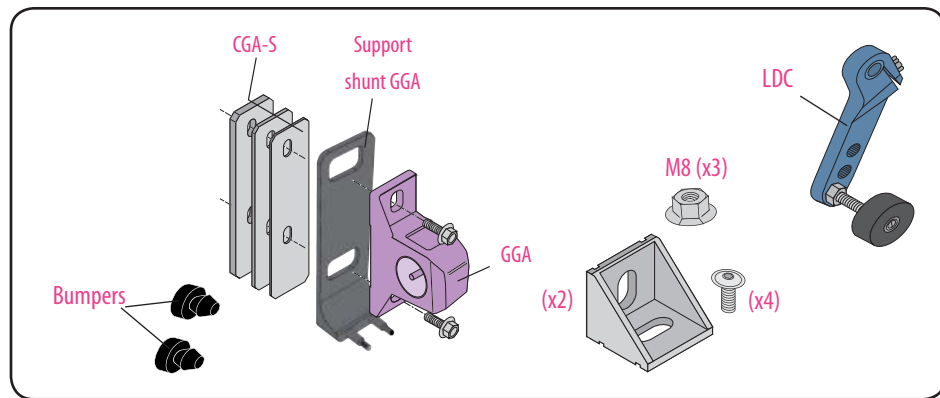
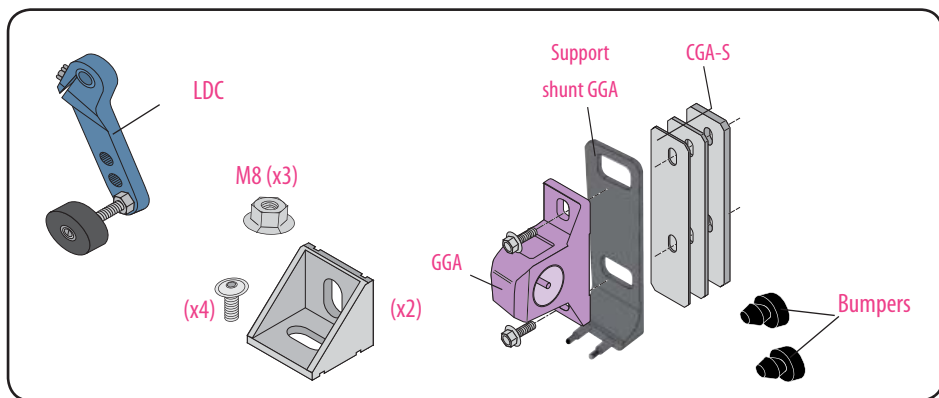
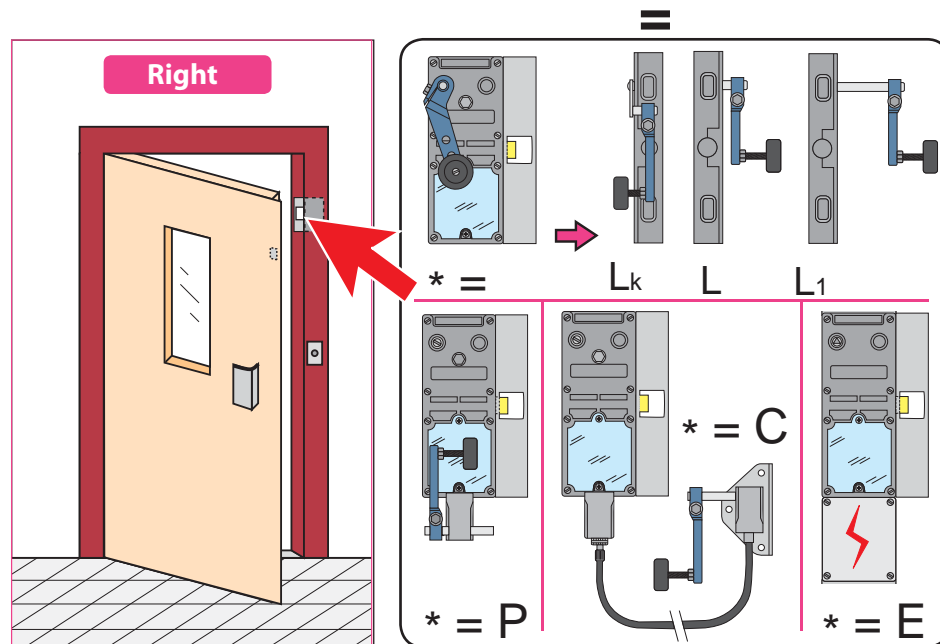
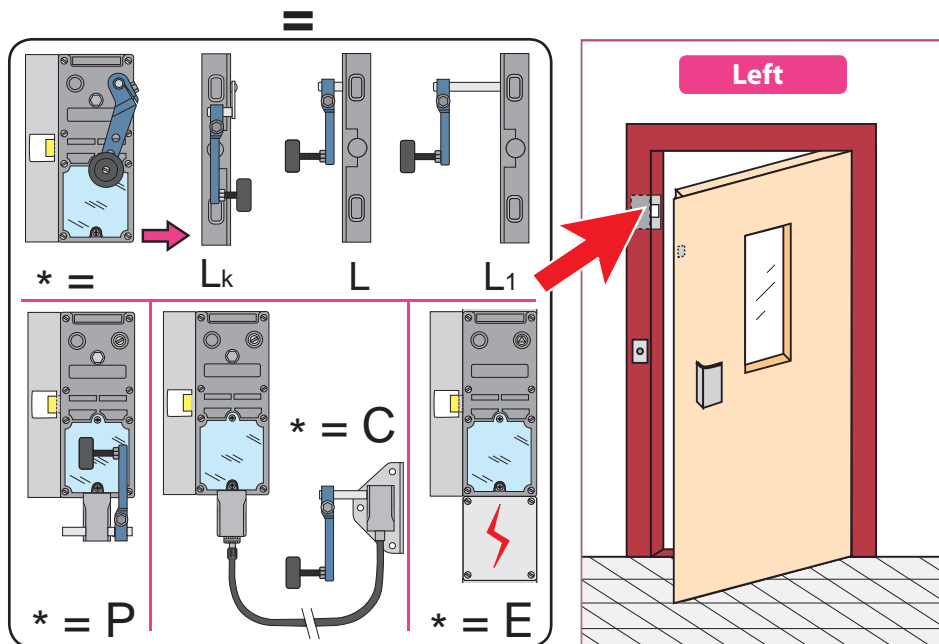
Substitution :

LR 180 * * GNI-S prudhomme S.a



réf. : LR180 *G GNI-S

réf. : LR180 *D GNI-S



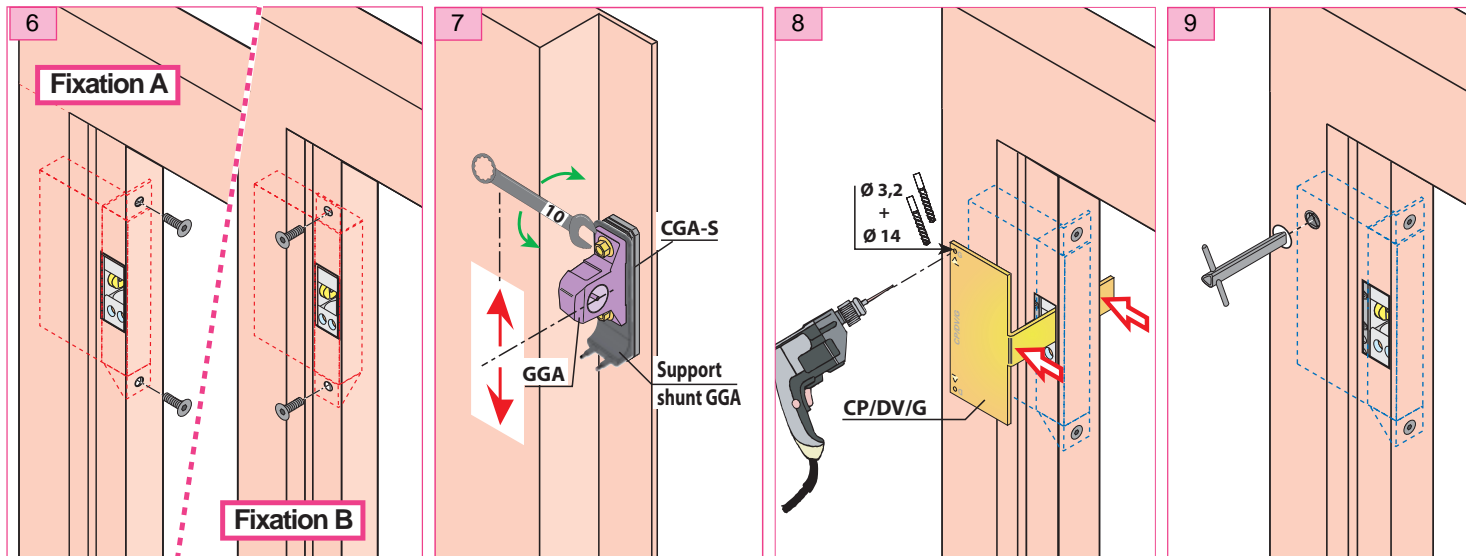
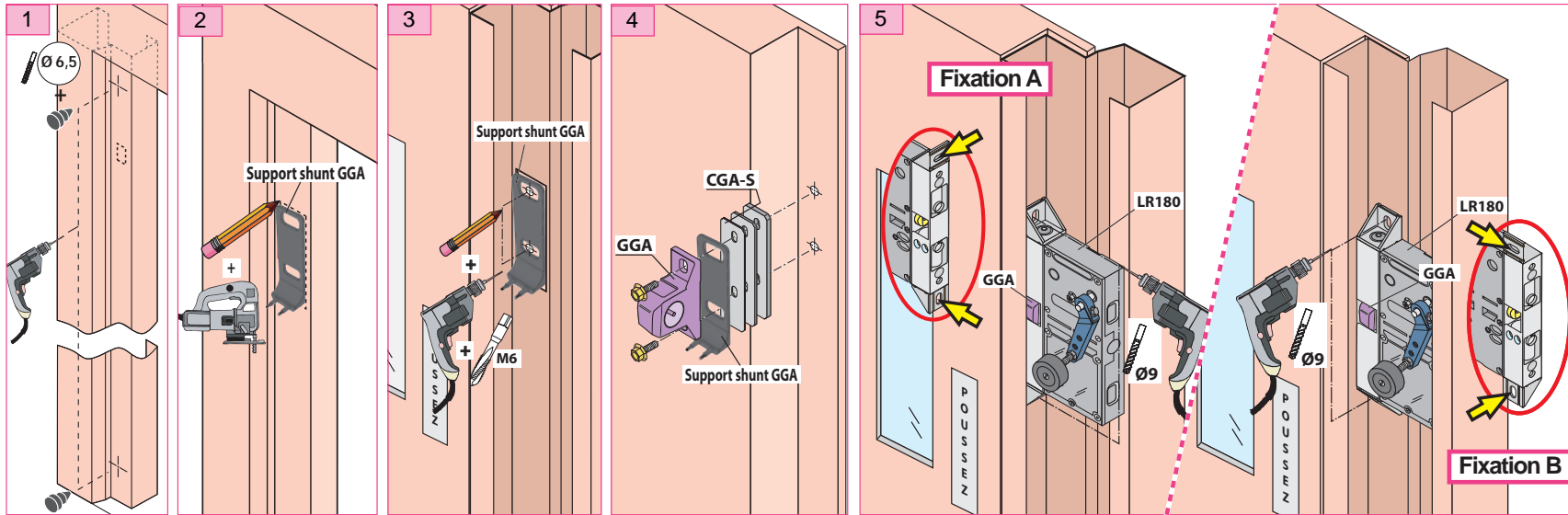
Non-identified lock on hinged landing door

Kit **GNI-S**

41
742

SETTING UP THE UNIT

Mounting stages



Incl. A du 12/08/2009

FP

Document non contractuel, sous réserve de modification - Reproduction interdite.

For hinged landing doors

